

# VIRTEK LASERQC

Engineering  
Simplicity.

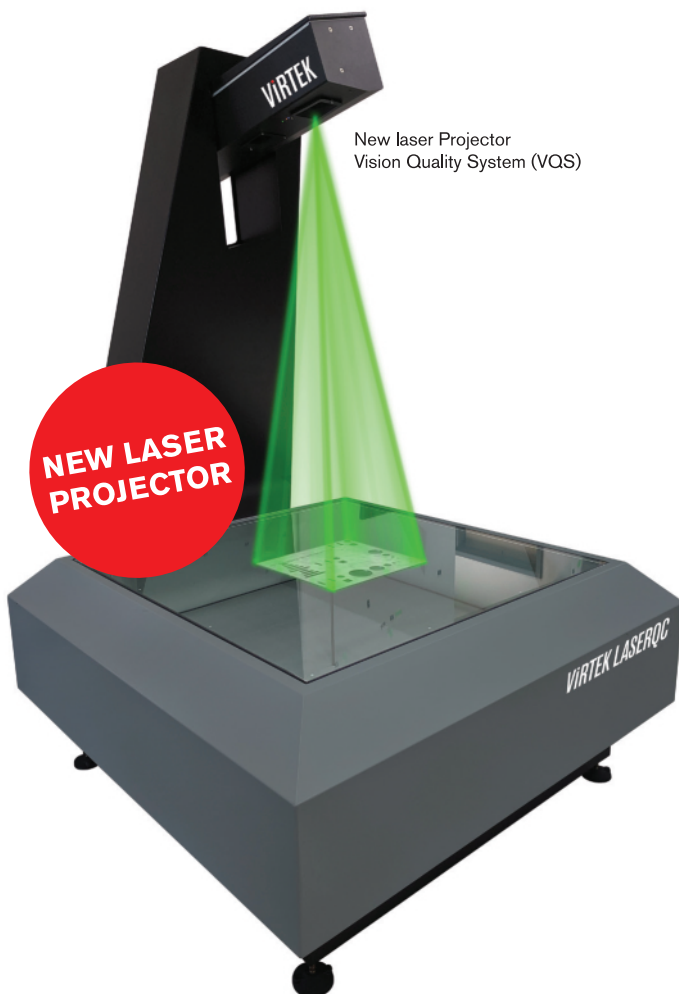


## Eliminate your QC Bottleneck

Generate a fully dimensioned inspection report in seconds.

## New look, same best in class reliability and performance.

LaserQC® is the premier solution for two-dimensional part inspection. LaserQC® dramatically increases throughput in precision sheet metal, foam, leather, aerospace, and gasket fabrication. The system is designed for first article inspection, quality reporting (SPC, ISO, LEAN), reverse engineering and automatic formed measurement.



New laser Projector  
Vision Quality System (VQS)

## LaserQC® delivers bottom-line results.

### Laser Fast (and Easy)

LaserQC® captures over 500 data points per second to make part inspections laser-fast, right on the shop floor.

Designed to set up easily so your system is up and running in less than a day. The intuitive user interface allows new operators to become fully proficient within just a few hours.

### Laser Accurate

The system quickly performs 100% inspections accurate to  $\pm 0.002"$  (0.05mm) for 2D measurements and  $\pm 0.010"$  (0.25mm) for formed measurements.

### Shop Floor Friendly

LaserQC® offers a reliable, low-maintenance solution that operates along side your facilities CNC equipment.

The system self-calibrates and adjusts system settings to accommodate for environmental changes common to the shop floor.

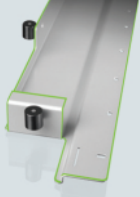
Additionally, Virtek offers a Part Stabilizer add-on, created specifically for use in the gasket and seal industries.



Part Stabilizer Add-on

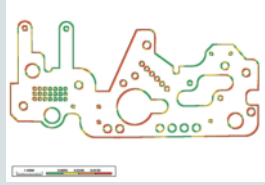
# Get the Edge in 2D and Formed Part Inspection

LaserQC® delivers the kind of bottom-line benefits that help your shop build and retain business – faster turnaround, increased throughput, lower costs per part, reduced scrap and rework, and ultimately higher customer satisfaction.



## First Article Inspection

Integrating laser inspection on your shop floor translates into more 'green-light' time for your production equipment.



## Accuracy Dashboard

LaserQC® makes first part inspection fast and easy with no special training required. Color codes indicate any part deviations.



## 2D Reverse Engineering

The scanning process captures the complete profile of existing parts or templates at laser speed.



## SPC & Quality Reporting

Inspection data from the LaserQC® is saved as CAD files, from which can generate color inspection reports to your specifications.

## LaserQC® 1200 System Specifications

Scanning Accuracy	±0.05mm (0.002") (2D only) ±0.25mm (0.010") for height measurement
Maximum Part Thickness	200mm (8.0") for 2D, 305mm (12.0") for AFM
Calibration	Automated
Maximum Scan Zone (single scan)	1220mm x 1220mm (48" x 48")
Oversized Parts	Capable with merged scan feature
Overall Dimensions (LxWxH)	2007mm x 1651mm x 2440mm (79" x 65" x 96")
Operating Environment	10 - 40°C (50 - 104°F)
Power Requirements	110V/60 Hz or 240V/50 Hz
Laser Device & Output	Laser diode device with max. 1mW accessible output
Laser Class	Class II, meeting the 21CFR 1040 standard for CDRH certification in North America Class 2, meeting the 60825-1:2014 (3rd Ed.), standard for CE certification in Europe
Software	Includes inspection, SPC and reverse engineering
Computer System	Windows 10 64-bit with monitor, keyboard, and mouse
Warranty	One-year warranty on hardware and software updates
Part Stabilizer Add-on for Gasket & Seal Industries	Contact Virtek Vision sales for details



Our customers constantly bring us parts to be reverse engineered. With LaserQC®, this process is quick and easy. The system will pay for itself in less than **two years.**"

John Tempelton, General Manager,  
Tempelton & Sons Metal Products Ltd.,  
Mississauga, Ontario, Canada



The reporting requirements for our government contracts previously took 2 days. With LaserQC®, we can now do it in **25 minutes.**"

Loren Buck, Manufacturing Manager  
Garlock Gasket and Seal,  
New York, New York, USA



The time factor is extremely important, especially in the service sector. With the LaserQC® we realize a significant **competitive advantage.**"

Thomas Strittmatter, Quality Manager,  
ABB Kleindöttingen,  
Zurich, Switzerland

## Unsurpassed Customer Support

Virtek's highly-skilled and experienced service technicians install and calibrate each projector and train users on site. Customer support centers ensure you achieve maximum productivity of your laser projector.



## Virtek Vision International

Local sales and service support available globally.

**CUTTECH (Authorised Distributor)**

+91-9922007505  
info@cuttech.in  
www.cuttech.in  
Head Office:  
2/1, 3rd Floor, Subhash Nagar  
New Delhi-110027

Branch office:  
333, 3rd Floor, Grand Central Mall  
Near Ambethan Chowk, Pune-Nasik  
Highway, Chakan, Pune-410501